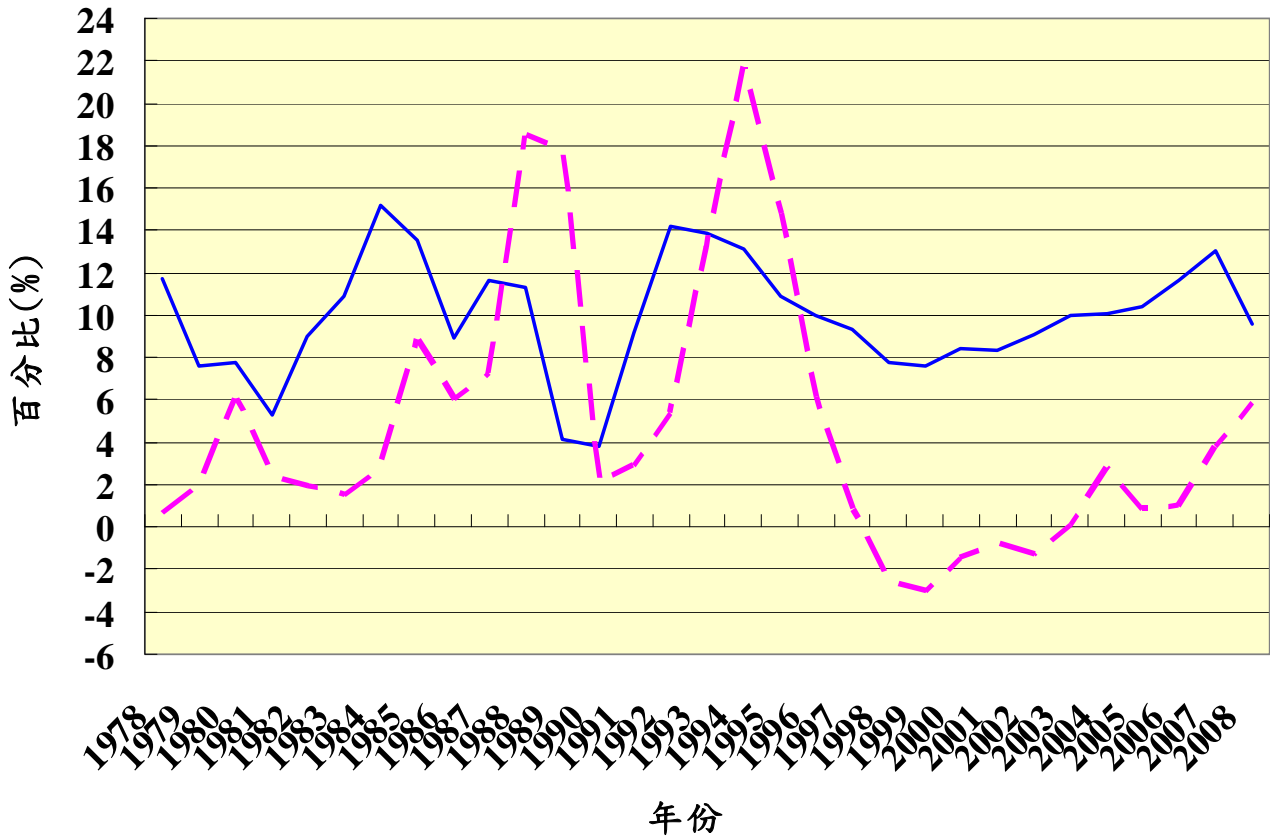


表一： 中國之經濟增長率與通脹率**Table 1: Real Growth and Inflation in China**

年份 Year	名義國內生產總值(億元) Nominal GDP (RMB 100mn)	國內生產總值實質增長率 Real GDP growth (%)	商品零售價格 通脹率 Retail inflation (%)
1978	3624.1	11.7	0.7
1979	4038.2	7.6	2.0
1980	4517.8	7.8	6.0
1981	4862.4	5.3	2.4
1982	5294.7	9.0	1.9
1983	5934.5	10.9	1.5
1984	7171.0	15.2	2.8
1985	8964.4	13.5	8.8
1986	10202.2	8.9	6.0
1987	11962.5	11.6	7.3
1988	14928.3	11.3	18.5
1989	16909.2	4.1	17.8
1990	18547.9	3.8	2.1
1991	21617.8	9.2	2.9
1992	26638.1	14.2	5.4
1993	35333.9	13.9	13.2
1994	48197.9	13.1	21.7
1995	60793.7	10.9	14.8
1996	71176.6	10.0	6.1
1997	78973.0	9.3	0.8
1998	84402.3	7.8	-2.6
1999	89677.1	7.6	-3.0
2000	99214.6	8.4	-1.5
2001	109655.2	8.3	-0.8
2002	120332.7	9.1	-1.3
2003	135170	10.0	-0.1
2004	159880	10.1	2.8
2005	183220	10.4	0.8
2006	211920	11.6	1.0
2007	257310	13.0	3.8
2008	314050	9.6	5.9
1978-2008	--	~9.8	~5.0

中國的經濟增長與通脹

— GDP 实质增长率 - - - 零售通胀率

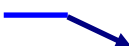




Real GDP growth rate —
Retail inflation rate - - -

表二：中國國內生產總值的行業比例

Table 2: Industrial Structure in China

單位 Unit: %

產業類別 Type of production	1978	1980	1985	1990	1995	2000	2002	2004	2005	2006	2008
第一產業 Primary 	28.2	29.9	28.2	27.1	19.8	15.1	13.5	13.4	12.5	11.8	10.7
第二產業 Secondary 	47.9	48.2	42.9	41.3	47.2	45.9	44.8	46.2	47.5	48.7	47.5
第三產業 Tertiary 	23.9	21.9	28.9	31.6	33	39.0	41.7	40.4	40.0	39.5	41.8

表三：全社會固定資產投資

Table 3: Total Social Fixed Investment

年份 Year	全社會固定資產投資 總額 (億元) Total social fixed investment (RMB100 million)	國有部門的投資(億元) Investment by the state sector (RMB100 million)	國有部門佔總投資 的比率 Share of state investment (%)
1980	910.9	745.9	81.89%
1981	961.0	667.5	69.46%
1982	1230.4	845.3	68.70%
1983	1430.1	952.0	59.58%
1984	1832.9	1185.2	64.66%
1985	2543.2	1680.5	66.08%
1986	3120.6	2079.4	66.63%
1987	3791.7	2448.8	64.58%
1988	4753.8	3020.0	63.53%
1989	4410.4	2808.2	63.67%
1990	4517.0	2986.3	66.11%
1991	5594.5	3713.8	66.38%
1992	8080.1	5498.7	68.05%
1993	13072.3	7925.9	60.63%
1994	17042.1	9615.0	56.42%
1995	20019.3	10898.2	54.44%
1996	22974.0	12056.2	52.48%
1996(N)	22913.5	12006.2	52.40%
1997	24941.1	13091.7	52.49%
1998	28406.2	15369.3	56.08%
1999	29854.7	15947.8	53.42%
2000	32917.7	16504.4	50.14%
2001	37213.5	17607.0	47.31%
2002	43499.9	18877.4	43.40%
2003	55566.6	21661.0	38.98%
2004	70477.4	25027.6	35.51%
2005	88773.6	29666.9	33.42%
2006	109998.2	32963.4	29.97%
2007	137323.9	28901.3 (?)	21.05% (?)
2008	172828.4	34398.5 (?)	19.90% (?)

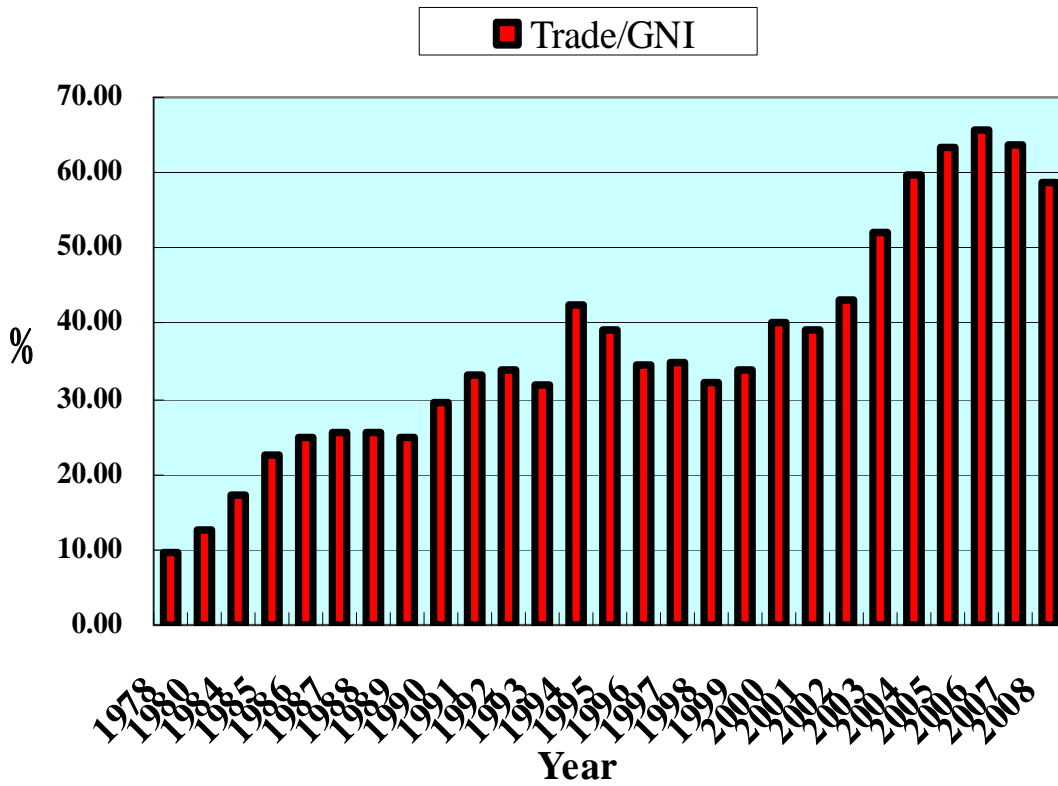
表四：中國進出口總值**Table 4: Imports and Exports in China**

單位：億美元

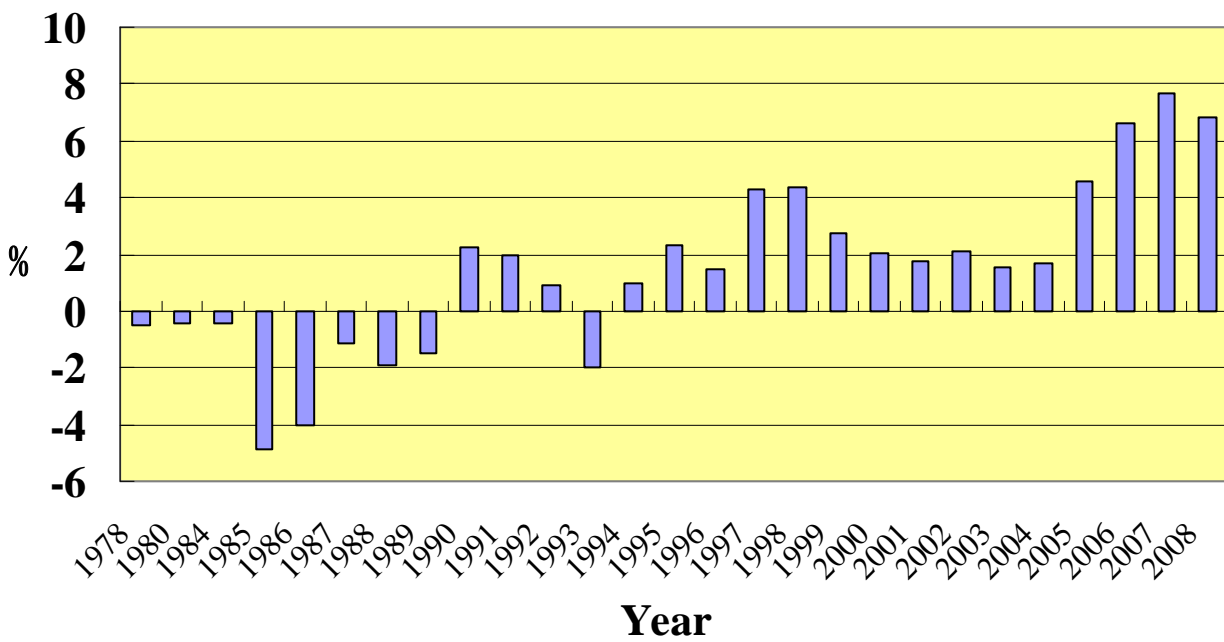
Unit: US\$100 million

年份 Year	總進出口 Total trade	占國民總收入的 比率(%) Total trade as % of GNI	出口 Exports	進口 Imports	外貿順 / 逆 差額 Trade balance
1978	206.4	9.5	97.5	108.9	-11.4
1980	381.4	12.6	181.2	200.2	-19.0
1984	535.5	17.2	261.4	274.1	-12.7
1985	696.0	22.6	273.5	422.5	-149.0
1986	738.5	24.8	309.4	429.1	-119.7
1987	826.5	25.5	394.4	432.1	-37.7
1988	1027.9	25.4	475.2	552.7	-77.5
1989	1116.8	24.7	525.4	591.4	-66.0
1990	1154.4	29.5	620.9	533.5	87.4
1991	1356.3	33.1	718.4	637.9	80.5
1992	1655.3	33.9	849.4	805.9	43.5
1993	1957.0	32.0	917.4	1039.6	-122.2
1994	2366.2	42.4	1210.1	1156.1	54.0
1995	2808.6	39.2	1487.8	1320.8	167.0
1996	2898.8	34.4	1510.5	1388.3	122.2
1997	3251.6	34.7	1827.9	1423.7	404.2
1998	3239.5	32.3	1837.1	1402.4	434.7
1999	3606.3	33.9	1949.3	1657.0	292.3
2000	4742.9	40.1	2492.0	2250.9	241.1
2001	5096.5	39.0	2661.0	2435.5	225.5
2002	6207.7	43.1	3256.0	2951.7	304.3
2003	8509.9	52.1	4382.3	4127.6	254.7
2004	11545.5	59.9	5933.2	5612.3	320.9
2005	14219.1	63.5	7619.5	6599.5	1020.0
2006	17604.0	66.1	9689.4	7914.6	1774.8
2007	21737.3	64.3	12177.8	9559.5	2618.3
2008	25632.6	59.4	14360.9	11325.6	2981.3

China's External Trade Dependency Ratio 中國外貿依存比率



China's External Trade Balance as a % of GNI



表五：中國非金融領域吸收外資的狀況

Table 5: China's Absorption of Non-financial Foreign Direct Investment

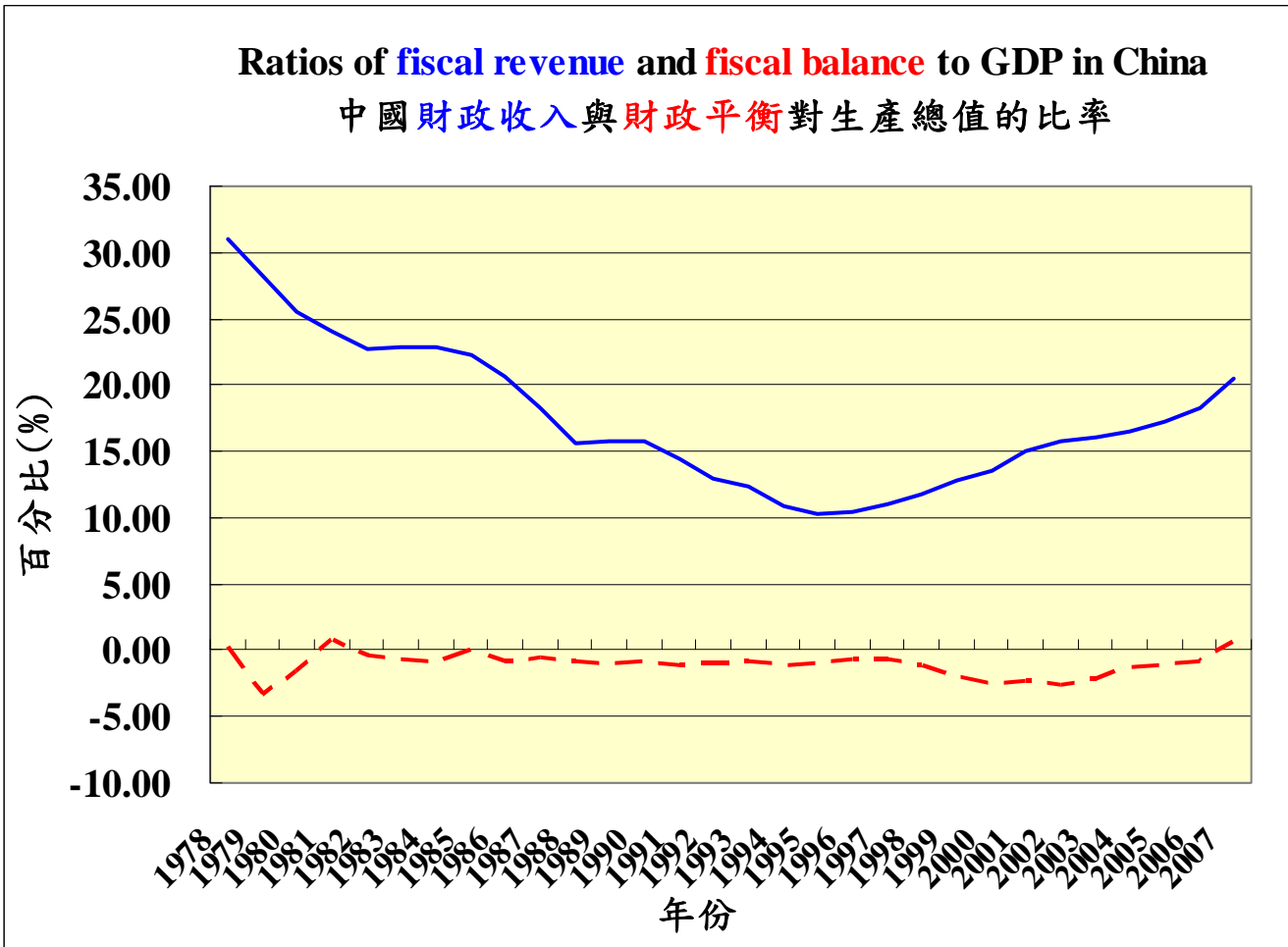
單位：億美元 Unit: US\$100million

年份 Year	外商直接投資合同金額 Contracted FDI	外商直接投資實際利用金額 Actual Utilization of FDI
1979-83	77.42	18.02
1984	26.51	12.58
1985	102.69	47.60
1986	122.33	76.28
1987	121.36	84.52
1988	160.04	102.26
1989	114.79	100.60
1990	120.86	102.89
1991	195.83	115.54
1992	694.39	192.03
1993	1232.73	389.60
1994	937.56	432.13
1995	1032.05	481.33
1996	816.10	548.05
1997	610.58	644.08
1998	632.01	585.57
1999	520.09	526.59
2000	711.30	593.56
2001	719.76	496.72
2002	847.51	550.11
2003	1169.01	561.40
2004	1565.88	640.72
2005	1925.93	638.05
2006	1982.16	670.76
2007	N.A.	783.39
2008	N.A.	952.53

表六：中國的財政收入與支出**Table 6: Fiscal Revenue and Expenditure in China**

單位：億元人民幣 Unit: RMB100 million

年份 Year	財政收入 Fiscal revenue (FR)	財政支出 Fiscal expenditure	財政平衡 Fiscal Balance (FB)	FR / GDP (%)	FB/GDP (%)
1978	1132.3	1122.1	10.2	31.24	0.28
1979	1146.4	1281.8	-135.4	28.39	-3.35
1980	1159.9	1228.8	-68.9	25.67	-1.53
1981	1175.8	1138.4	37.4	24.18	0.77
1982	1212.3	1230.0	-17.7	22.90	-0.33
1983	1367.0	1409.5	-42.5	23.03	-0.72
1984	1642.9	1701.0	-58.1	22.91	-0.81
1985	2004.8	2004.3	0.5	22.36	0.01
1986	2122.0	2204.9	-82.9	20.80	-0.81
1987	2199.4	2262.2	-62.8	18.39	-0.52
1988	2357.2	2491.2	-134.0	15.79	-0.90
1989	2664.9	2823.8	-158.9	15.76	-0.94
1990	2937.10	3083.59	-146.49	15.84	-0.79
1991	3149.48	3386.62	-237.14	14.57	-1.10
1992	3483.37	3742.20	-258.83	13.08	-0.97
1993	4348.95	4642.30	-293.35	12.31	-0.83
1994	5218.10	5792.62	-574.52	10.83	-1.19
1995	6242.20	6823.72	-581.52	10.27	-0.96
1996	7407.99	7937.55	-529.56	10.41	-0.74
1997	8651.14	9233.56	-582.42	10.95	-0.74
1998	9875.95	10798.18	-922.23	11.70	-1.09
1999	11444.08	13187.67	-1743.59	12.76	-1.94
2000	13395.23	15886.50	-2491.27	13.50	-2.51
2001	16386.04	18902.58	-2516.54	14.94	-2.29
2002	18903.64	22053.15	-3149.51	15.71	-2.62
2003	21715.25	24649.95	-2934.7	16.07	-2.17
2004	26396.47	28486.89	2090.42	16.51	1.31
2005	31649.29	33930.28	-2280.99	17.27	-1.24
2006	38760.20	40422.73	-1662.53	18.29	-0.78
2007	51321.78	49781.35	1540.43	19.95	0.60
2008	61330.35	62592.66	-1262.31	19.53	-0.40



財政收入 ————
財政平衡 - - - - -

表七：中國中央與地方的財政赤字

Table 7: Central and Local Fiscal Deficits

單位：億元人民幣 Unit: RMB100 million

年份 Year	全國 Whole nation	中央政府* Central government*	地方政府* Local governments*
1979	-135.4	-423.74	+288.33
1980	-68.9	-382.36	+313.46
1981	37.4	-314.58	+351.96
1982	-17.7	-304.97	+287.32
1983	-42.5	-269.59	+227.02
1984	-58.1	-227.86	+169.7
1985	0.5	-25.62	+26.19
1986	-82.9	-57.94	-24.96
1987	-62.8	-109.34	+46.51
1988	-134.0	-70.28	-63.79
1989	-158.9	-66.25	-92.63
1990	-146.49	-12.05	-134.44
1991	-237.14	-152.56	-84.58
1992	-258.83	-190.93	-67.9
1993	-293.35	-354.55	+61.2
1994	-574.52	1152.07	-1726.59
1995	-581.52	1261.23	-1842.75
1996	-529.56	1509.80	-2039.36
1997	-582.42	1694.42	-2276.84
1998	-922.23	1766.40	-2688.63
1999	-1743.59	1696.88	-3440.47
2000	-2491.27	1469.32	-3960.59
2001	-2516.54	2814.72	-5331.26
2002	-3149.51	3616.94	-6766.45
2003	-2934.7	4445.17	-7379.87
2004	2090.42	6609.02	-8699.44
2005	-2280.99	7772.56	-10053.55
2006	-1662.53	10465.22	-12127.75
2007	1540.43	16307.10	-14766.67
2008	-1262.31	19336.39	-20598.70

*Note: Net revenue at the relevant governmental level. 本級政府收入與支出的相

比。

表八：貨幣供應與股票市價總值**Table 8: Money supply and Stock Market Capitalisation**

年份 Year	貨幣供應 M2 (億元) Money Supply M2 (RMB100 million)	相對於 GDP 的比率 As a percentage of GDP (%)	股票市價總值(億元) Market Capitalisation of Stocks (RMB100 million)	相對於 GDP 的比率 As a percentage of GDP (%)
1990	15293.4	82.45		
1991	19349.9	89.51		
1992	25402.2	95.36		
1993	34879.8	98.71		
1994	46923.5	97.36	3690.61	7.66
1995	60750.5	99.93	3474.0	5.71
1996	76094.9	106.91		
1997	90995.3	115.22	17529.0	22.20
1998	104498.5	123.81	19506.0	23.11
1999	119897.9	133.70	26471.2	29.52
2000	134610.3	135.68	48090.9	48.47
2001	158301.9	144.36	43522.2	39.69
2002	185007.0	153.75	38329.0	31.85
2003	221222.8	163.66	42457.7	31.41
2004	254107.0	158.94	37065.0	23.18
2005	298755.7	163.06	32430.3	17.70
2006	345603.6	163.08	89403.9	42.19
2007	403442.2	156.79	327141.0	127.14
2008	475166.6	151.30	121366.0	38.65

表九：中國的外匯儲備**Table 9: Foreign Exchange Reserves in China**

年份 Year	億美元 US\$100 million
1979	8.40
1980	-12.96
1981	27.08
1982	69.86
1983	89.01
1984	82.20
1985	26.44
1986	20.72
1987	29.23
1988	33.72
1989	55.50
1990	110.93
1991	217.12
1992	194.43
1993	211.99
1994	516.20
1995	735.97
1996	1050.29
1997	1398.90
1998	1449.60
1999	1546.75
2000	1655.74
2001	2121.65
2002	2864.07
2003	4032.51
2004	6099.32
2005	8189.00
2006 (World's No. 1)	10663.44
2007	15282.49
2008	19460.30

圖一：八十年代產業結構不平衡

Figure 1: Structural disequilibrium in the 1980s

